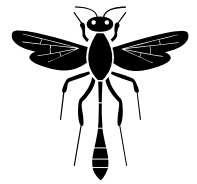


ARCTIC TRACE®

YELLOW JACKET SUBMERSIBLE HEATER

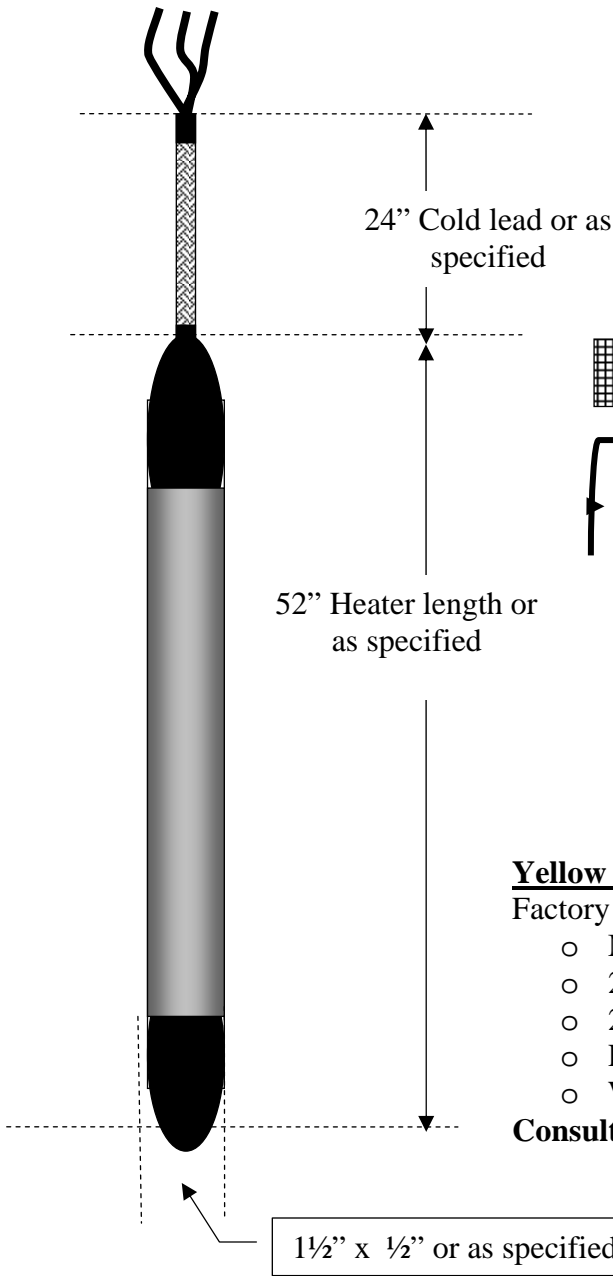
Water, Sewer, Tank, and Sump Freeze Protection



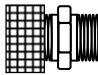


The preassembled heater bundle is manufactured with heater model Z12XX12CBTL and includes a Polyolefin outer jacket and minimum cold lead of 24"

Maximum de-energized heater temperature not to exceed 350F

Heater may be energized in liquid or air as required by the applications with out heater damage



Optional Equipment

-  • 206C 1/2" water proof MNPT junction box or conduit cord adapter
 -  • Roof Vent Pipe mounting bracket
 - 775C2 * 2" pipe
 - 775C3 * 3" pipe
 - 775C4 * 4" pipe
 - 775C6 * 6" pipe
 -  • 885C1 wall mounting bracket
- Two brackets required for each 4' wall mounted length heater with a minimum of 2 brackets per heater.**

120 VAC

L	N	G
W	W	B
H	H	R
I	I	A
T	T	I
E	E	D

HEATER ELECTRICAL CONNECTIONS

Yellow Jacket Series 80 Submersible Heater

Factory assembled heater bundle.

- Model number **Z120512SSTL/Series 80XX**
- 20 watts per foot at 120 VAC or as specified
- 24" cold lead for power connection or as specified
- Polyolefin outer jacket
- Weight .07 Lbs. per foot on average

Consult Factory for optional length or watt output availability

du Alaska Incorporated

6706 Greenwood Street, Anchorage Alaska 99518
 Phone (907)522-3004 Fax (907)349-1023
 dualaska@alaska.net

Heater surface Temperature will not exceed 150F in open air at 20 watt per foot output.



Underwriters Laboratory
 Our freeze protection cable has been sublimated to and tested by UL and has been recognized by that testing laboratory as a component heating cable to be used in an appropriate freeze protection system



Commercial & Industrial
 Ordinary and Hazardous Locations – 75C wet, 150C Dry
 Classified Class I, Groups C & D – Division 1 & 2
 Class II, Groups E, F, & G – Division 1 & 2
 On metal and nonmetallic pipe and vessels – 3A, 3B, 3C
 In metal and nonmetallic pipe and vessels – 4A, 4B, 5A, 5B wet location industrial



United States Environmental Protection Agency
 Acceptable for surfaces which contact potable water.



Commercial & Industrial **UL 515**
 Ordinary Locations – 75C wet, 150C Dry
 On metal and nonmetallic pipe and vessels – 3A, 3B, 3C
 In metal and nonmetallic pipe and vessels – 4A, 4B, 5A, 5B wet location industrial US Type A B C D