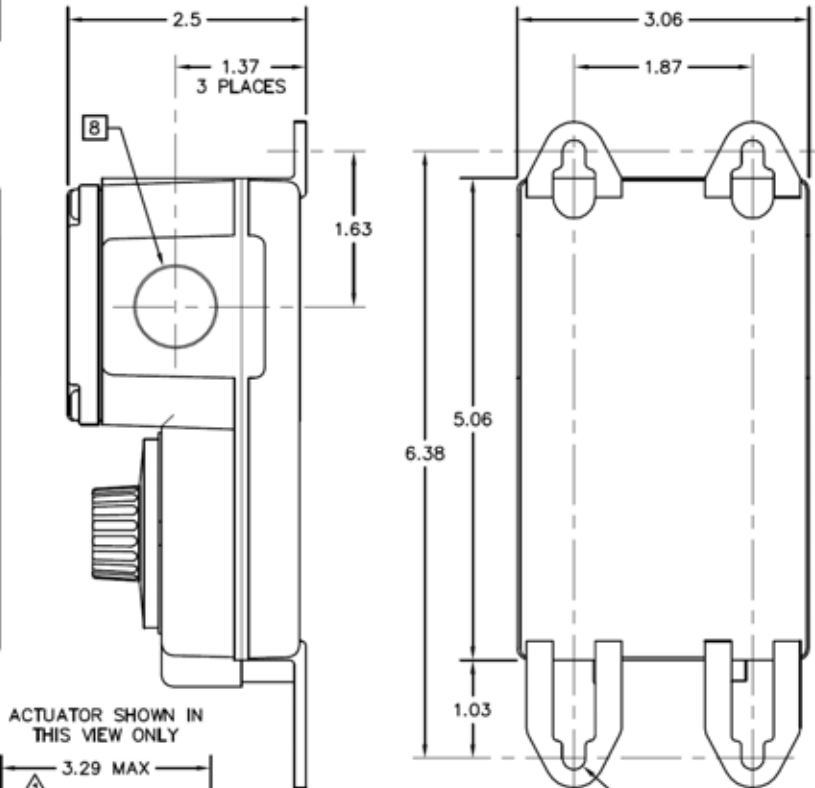
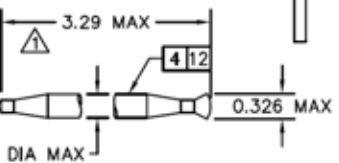


NOTES:

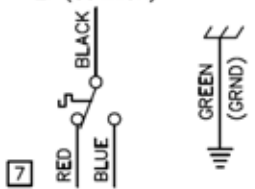
1. SPDT THERMOSTAT IS HOUSED WITHIN RAIN-TIGHT LIGHT GRAY PLASTIC TYPE 4X ENCLOSURE. BLACK KNOB HAS WHITE MARKINGS.
2. ADJUSTABLE TEMPERATURE RANGE IS 0 F TO 120 F (-18 C TO 49 C). ONE DIAL DIVISION EQUALS 2.5 F.



ACTUATOR SHOWN IN THIS VIEW ONLY



L1 (COMMON)



HEATING OR COOLING EQUIPMENT, SPDT, OPENS ONE CIRCUIT (RED/BLACK, REF. HEATING), CLOSES ONE CIRCUIT (BLUE/BLACK, REF. COOLING) ON TEMPERATURE RISE.

DATE	REV	DESCRIPTION	DR.	CK.
07/02/04	0	SO 6279 INITIAL RELEASE	DB	GCS
11/11/04	1	ECO 6415, ADDED STAINLESS STEEL AS ALTERNATIVE BULB AND CAPILLARY	DB	
8/10/05	2	ECO 6559 REMOVED THE SUNNE NAME REPLACED WITH PECO	RM	

3. U.L. LISTED FILE E50023. C.S.A. CERTIFIED FILE NO. LR30247.
4. MAXIMUM AMBIENT TEMPERATURE FOR ENCLOSURE ASSEMBLY IS 140 F (60 C). MAXIMUM TEMPERATURE FOR SENSING BULB IS 160 F (71 C).

5. CAPILLARY LENGTH IS 60 INCHES. AVOID SHARP BENDS, 0.25 MINIMUM INSIDE RADIUS.

6. ELECTRICAL RATING:

VAC	INDUCTIVE		RESISTIVE AMPS	PILOT DUTY
	FLA	LRA		
120	16.0	80.0	25	125 VA
208	13.2	66.0	25	125 VA
240	12.0	60.0	25	125 VA
277	10.0	50.0	22	125 VA
480	---	---	5	125 VA

SUITABLE FOR 24 VAC OPERATION

7. LOAD LEADS ARE #14 AWG 600 V 105 C STRANDED COPPER WIRE. FREE LEAD LENGTH IS 6" MINIMUM WITH WIRE ENDS STRIPPED TO 0.62".

8. KNOCKOUT ALSO IN FAR SIDE OF WIRING COMPARTMENT. 1/2" TRADE SIZE KNOCKOUTS AT 3 LOCATIONS PROVIDE FOR U.L. LISTED RAIN-TIGHT CORD SEALS OR CONDUIT HUBS.

9. ENCLOSURE MOUNTS TO WALL OR PANEL SURFACE WITH #8 OR WITH #10 SCREWS.

10. MARKING TO INCLUDE:

4MY93
E50023
LR30247
DC (DC REPRESENTS A DATE CODE.)

11. UNIT IS INDIVIDUALLY BOXED WITH INSTRUCTION SHEET. COVER, GASKET, AND SCREWS (SHOWN IN THE ASSEMBLED POSITION) ARE PACKED WITH UNIT, 20 UNITS PER MASTER CARTON.

- ⚠ 12. BULB AND CAPILLARY ARE CONSTRUCTED OF CORROSION RESISTANT STAINLESS STEEL OR PLATED COPPER.

REF: 4MY93

TOLERANCES EXCEPT AS NOTED	DU ALASKA INCORPORATED.		
DECIMAL .X= .XX= .XXX=	PART NUMBER	SCALE	
	68426	HALF	
ANGULAR ±	MODEL TRF115-005		
ACAD FILE	DRAWING NUMBER	DIST. CODE	FA
TRF115005	ATRF115-005		